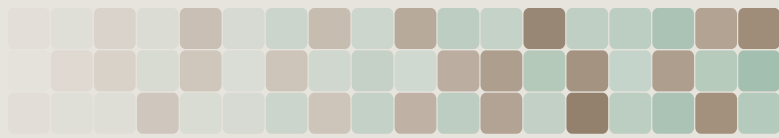


Waterhog™ Eco Premier and Fashion

High Traffic, Indoor and Outdoor Applications

No Set-Up Fees • 5 Day Production



Features and Benefits

- Standard “classic” rubber or optional “fashion” fabric borders.
- “Water Dam” border traps dirt and moisture.
- Absorbs up to 1.5 gallons of water per square yard.
- Durable, UV resistant.
- Easy to clean! Vacuum, hose off or steam clean.

Mat Specifications

Overall Mat Thickness: 3/8”

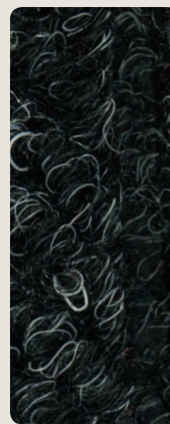
Mat Surface: 100% Recycled Polyester (PET) Fabric

Carpet Weight: 30 oz/sq yd

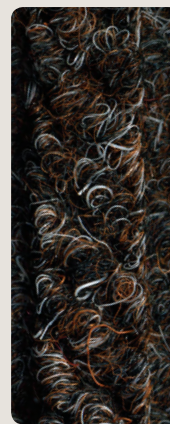
Mat Borders: SBR Rubber or 100% Recycled Polyester (PET) Fabric

Mat Backing: SBR Rubber

Color Options



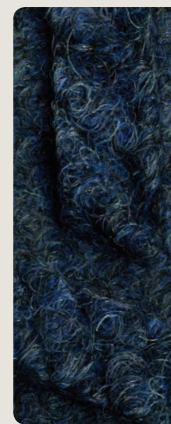
Black Smoke



Chestnut Brown



Grey Ash



Indigo

Standard Sizes

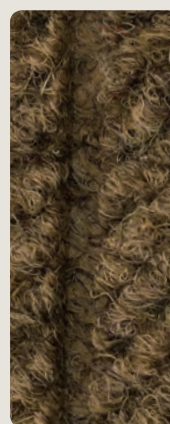
Size	Finished Size	Weight
2' x 3'	24" x 35"	6 lbs.
3' x 4'	35" x 46"	11 lbs.
3' x 5'	35" x 59"	13 lbs.
3' x 10'	35" x 118"	24 lbs.
4' x 6'	45" x 70"	19 lbs.
4' x 8.4'	45" x 101"	26 lbs.
6' x 8.4'	71" x 101"	38 lbs.

Only available in 3', 4' and 6' widths.

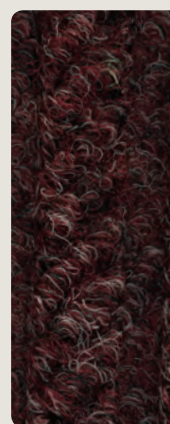
Special sizes are available.

All mats have a 3-5% size variance.

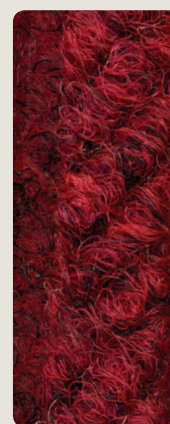
Different designs, sizes and products cannot be combined for higher quantity break pricing.



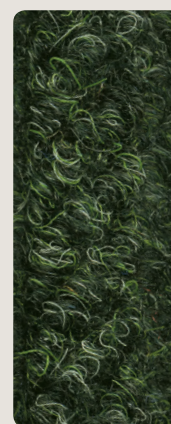
Khaki



Maroon



Regal Red



Southern Pine