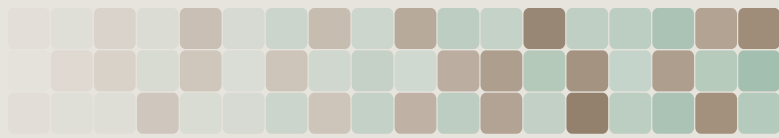


Waterhog™ Eco Grand Elite

High Traffic, Indoor and Outdoor Applications

No Set-Up Fees • 5 Day Production



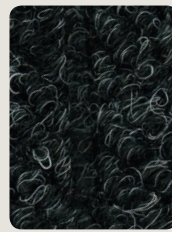
Features and Benefits

- “Water Dam” fabric border traps dirt and moisture.
- Absorbs up to 1.5 gallons of water per square yard.
- Durable, UV resistant.
- Easy to clean! Vacuum, hose off or steam clean.

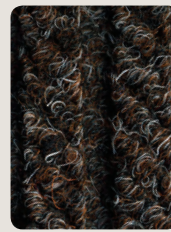
Mat Specifications

Mat Surface: 100% Recycled Polyester (PET) fabric
 Fabric Weight: 30 oz/sq yd
 Mat Thickness: 3/8”
 Mat Borders: 100% Recycled Polyester (PET) Fabric
 Mat Backing: SBR Rubber

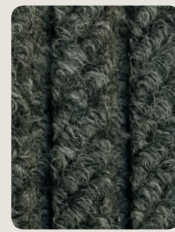
Color Options



Black Smoke



Chestnut Brown



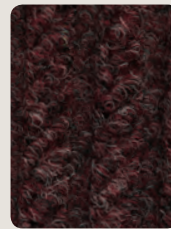
Grey Ash



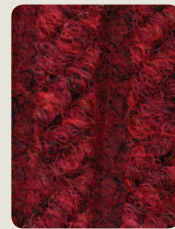
Indigo



Khaki



Maroon



Regal Red



Southern Pine

Standard Sizes

Size	Finished Size	Weight
Half Oval		
3' x 1.8'	35" X 22"	7 lbs.
4' x 2.3'	45" X 28"	10 lbs.
6' x 3.3'	71" X 40"	16 lbs.
Two Ends		
3' x 7.1'	35" x 85"	18 lbs.
3' x 11.7'	35" x 139"	26 lbs.
4' x 12.6'	45" x 150"	36 lbs.

Size	Finished Size	Weight
One End		
3' x 5.5'	35" x 66"	15 lbs.
3' x 10'	35" x 114"	24 lbs.
4' x 5.9'	45" x 69"	20 lbs.
4' x 10.5'	45" x 119"	33 lbs.
6' x 7'	71" x 84"	30 lbs.

All mats have a 3-5% size variance.
 Different designs, sizes and products cannot be combined for higher quantity break pricing.