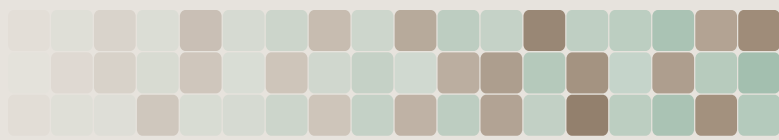


# HogHeaven™ Plush

High Traffic, Indoor Applications

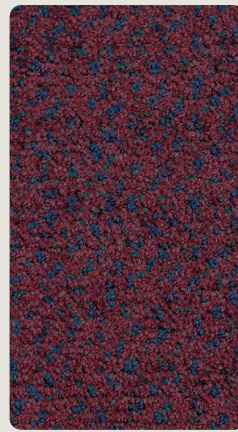
No Set-Up Fees • 5 Day Production



## Features and Benefits

- Solution dyed nylon mat top.
- Exceptional anti-fatigue properties.
- Beveled edges for safety.
- 7/8" or 5/8" thick cushion.
- UV, chemical and oil resistant.
- Easy to clean! Vacuum or sweep.

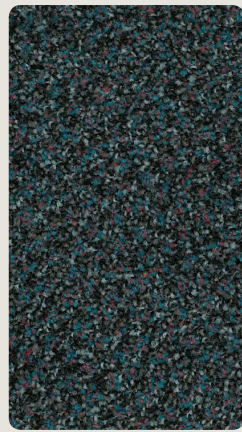
## Color Options



Brandywine



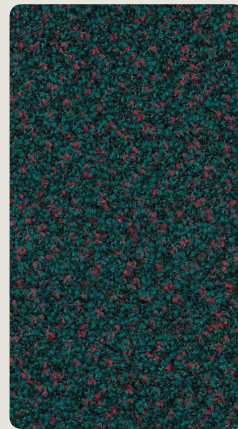
Cinnamon



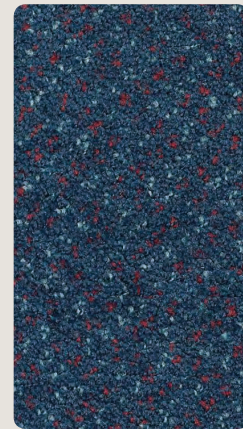
Confetti Grey

## Mat Specifications

Overall Mat Thickness: 7/8" or 5/8"  
 Mat Surface: Solution Dyed Nylon Yarn  
 Static Dissipative  
 Mat Borders: Beveled Fabric Borders  
 Mat Backing: Foam Rubber



Forest Green



Navy Spice

## Standard Sizes

Size	Finished Size	Weight
2' x 3'	24" x 33"	9 lbs.
3' x 5'	33" x 58"	19 lbs.
3' x 12'	33" x 142"	40 lbs.

Special sizes are available in 3' width.  
 All mats have a 3-5% size variance.  
 Different designs, sizes and products cannot be combined for higher quantity break pricing.